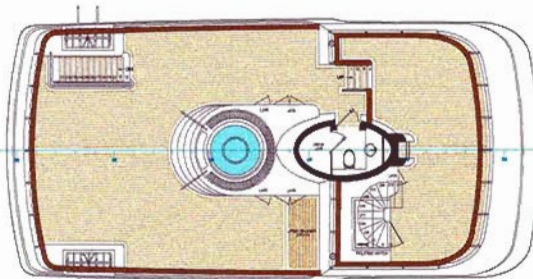


**CHEOY LEE
SHIPYARDS****STANDARD SPECIFICATION****CHEOY LEE 128' EXPEDITION SERIES MOTOR YACHT Specifications ^(A)**

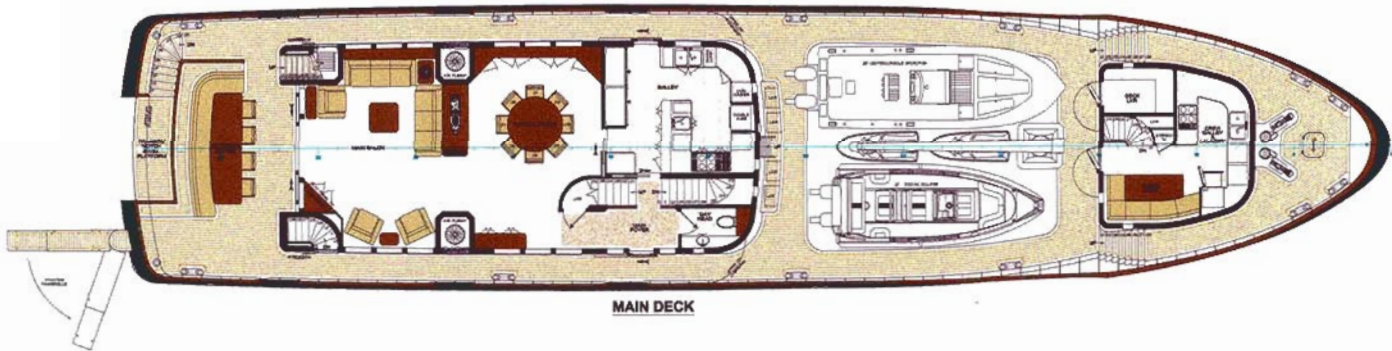
Length Overall	128'0"	39.01 m
Length Waterline	113'0"	34.44 m
Beam	28'0"	8.53 m
Draft (maximum-full load)	8'5"	2.57m
Displacement ^(B)	762,000 lbs	345,500 kg
Fuel ^(B)	18,000 USG	68.1m ³
Water ^(B)	3,500 USG	13.2m ³
Black Water	750 USG	2.84m ³
Gray Water	750 USG	2.84m ³
Lube Oil	200 USG	0.76m ³
Used Oil	200 USG	0.76m ³
Engines	Twin CATERPILLAR C18, 873 hp each	
Generators	Twin NORTHERN LIGHTS 65 kW, 60 Hz	



FLYBRIDGE DECK



UPPER DECK



MAIN DECK



LOWER DECK



CHEOY LEE

PRINCIPAL DIMENSIONS

LENGTH OVERALL	39.00 METERS (128'-00")
LENGTH OF THE WATERLINE	34.90 METERS (113'-08")
BEAM (MAIN DECK)	8.55 METERS (28'-00")
DRAFT	2.80 METERS (9'-00")
HULL MATERIAL	STEEL
SUPERSTRUCTURE MATERIAL	FIBERGLASS
FUEL CAPACITY	TBD
FRESH WATER CAPACITY	TBD
NAVAL ARCHITECTURE	MURRAY & ASSOCIATES, INC.
MAIN ENGINES	(2) CATERPILLAR 3412C
GENERATORS	(2) TBD
CLASSIFICATIONS	TBD

PREPARED BY:

MURRAY & ASSOCIATES, INC.

Marine Engineers • Naval Architects • Project Managers

100 Boulevard 542 Street Fort Lauderdale, Florida 33304 Phone (954) 527-6528 Fax (954) 527-6524 E-mail: info@murray-qa.com

All drawings of general arrangement, design detail and invention, are the property of Murray & Associates, Inc. and may be used solely for your contract or its express written permission of Murray & Associates, Inc. All drawings are subject to detail development during the course of construction.

ALL RIGHTS OF REPRODUCTION ARE RESERVED.

STANDARD EQUIPMENT

Construction & Exterior Finish

- Hull, deck and lower deck bulkheads to be of welded mild steel construction
- Superstructure of composite construction. CORE-CELL or equivalent cored fiberglass with bi-axial and multi-axial E-glass reinforcement
- Double bottom fuel, fresh water and holding tanks
- Steel rub rail with stainless steel capping
- Tinted (except in pilothouse) tempered glass windows, utilizing high strength, adhesion style window system
- Awlcraft 2000 exterior finish (Off White with Green trim)
- Awlgrip non-skid exterior decks except where noted
- 5 year structural warranty
- Two coats of anti-foul bottom paint
- Classification LRS ✕ 100A1 SSC Yacht Mono G6 LMC, MCA CISR

Deck

- All hardware chrome on brass, 316 stainless steel or anodized/painted aluminum
- Dual vertical anchor windlasses, MAXWELL 11,000 lbs capacity, with 3/4" chain catheads and rope capstans and deck pipes. Chain wash and anchor snubbing system. Local handheld pendant controls.
- Two 675 lb. (306 kg) Super High Holding Power galvanized anchors stowed in recessed stainless steel lined hull side pockets
- Two lengths of 500', 3/4" galvanized chain
- Fresh water wash down outlets on bow, boat deck and transom
- Stainless steel mooring bollards (12)
- Stainless steel fairleads
- Stainless steel rails, 1.5"
- Navigation lights
- Boarding gates port and starboard
- Step plate at deck entrances
- MARQUIPT Sea-Stair boarding ladders, port and starboard, stowed in lockers when not in use.
- Scuppers draining to boot top
- NAUTICAL STRUCTURES EZ-3000 hydraulic crane with power rotation on foredeck
- Stayed foremast with crows nest and ladder. Control station is optional.
- Deck locker in forecastle
- Seat/lockers forward of deckhouse with stainless steel ladder to pilothouse deck

Electrical Systems

- 240(3-phase)/110v(1-phase)AC and 24/12vDC electrical panels, main panels in engine room and zone panels throughout vessel
- Two 65kW generating sets, 60hz, 3-phase with sound shields and hydraulic PTO's
- Two ACR 100 searchlights, 24v DC
- Halogen overhead light fixtures throughout
- Soffit and floor rope lighting
- Automatic wardrobe lights
- Emergency lights, 24vDC, automatic at loss of AC power, to incorporate floor and stairway lights and selected overhead lighting. Removable emergency flashlights in each stateroom
- 110vAC receptacles in galley, heads, engine room and exterior are protected with GFI safety breakers
- Two banks of 24vDC, 210 amp-hour batteries for engine start.
- Emergency engine start battery. Manual switch parallel system
- Two sets of 24vDC, 175 amp-hour battery banks for generator starting
- One 24vDC 420 amp-hour house battery bank for general service with 60 amp charger
- One bank of 24vDC, 210 amp-hour batteries with 24vDC, 60 amp battery charger and 50 amp VANNER 12vDC power supply. 12 spare 24/12vDC circuit breakers in sub-panel for electronics use
- Two GLENDINNING shore power Cablemaster systems, 240vAC, 100 amp 3-phase with 120 ft. cables and ASEA 125 kVA dual cabinet power conversion system
- Shore telephone inlet, with 120' cable located in transom locker
- Shore cable television inlet, with 120' cable located in transom locker
- Dynaplate grounding plate and strap to pilothouse and flybridge ground terminal boards
- Voltmeters and ammeters for supply circuits
- Lightning arrestor system
- TERASAKI Maxi Guard monitoring and alarm system.

Engine Room

- NAIAD 20LHT, 85 hp, hydraulic bow thruster
- NAIAD 420 stabilizer system with 25 square foot fins and Multisea controls.
- Twin CATERPILLAR C18, 873 hp diesel engines, fresh water cooled, electronic injection / governor, 24vDC starting
- Standard engine maker instrumentation
- ZF reverse/reduction gearboxes
- Underwater main engine exhausts with above water by-pass, with 316L stainless steel piping
- NORTHERN LIGHTS generators, 2 x 65kW with hydrolastic mounts and sound shields, load sharing and transfer capable.
- Local mounted start/stop instrument panels for main engines and generators
- CENTEK or equal combo generator mufflers, air/water separator type, with hull side outlets

- 240vAC reverse cycle chilled water air conditioning (except engine room) with fresh air make-up.
- Engineered engine room ventilating system via air/water separators with shut down devices for intake blower. Two 240vAC 3-phase 2-speed axial-flow fans, reversible fan direction for extraction or supply.
- Engineered fire protection system, consisting of manually and automatically actuated CO₂ fire extinguishing system. Upon system actuation audio/visual alarms sound, blowers shut down and hull side ventilation dampers are closed
- Low pressure water sprinkler system for interior spaces
- Power hydraulic steering system with backup, including valves for optional autopilot installation
- Lube oil change system (110vAC) with pump, manifold and hoses to all engines and gearboxes. Clean and used oil storage tanks with deck fill
- RACOR fuel filters for main engines, manifolded three per main engine. Fuel water separators with alarm
- RACOR filters for generators, one each
- Two 50 gallon water heaters, dual element, quick recovery type with hot water ring line and circulating pump
- Dual 110vAC water pumps and accumulator tank for fresh water pressure system
- Cartridge style whole system water filter unit
- Sink with fresh water hose bib
- 240vAC 3-phase self priming electric bilge pumping system with valve manifold and suction lines to each compartment, with strum boxes. Back-up pumping by deck wash pump
- Engine driven emergency bilge pump
- Emergency hand bilge pump
- Oily bilge water separator system
- Fuel management system consisting of fuel shut-off valves, fuel transfer pump with meter system and selector manifold
- HART Tank Tender gauges for fuel, fresh water, black water and grey water tanks, pneumatic pump type
Tank level indication remote display on TERASAKI Maxi Guard alarm system
- Two reverse osmosis fresh water makers, 1,200 US gallons/day each. Commercial pre-filter and oily water separator
- Black water tank level indicator and high level alarm
- Black water system with HAMANN sewage treatment plant
- GROCO bronze raw water strainers for all engines and sea water pump intakes
- Seacocks on all through hull fittings below the waterline
- Fiberglass battery boxes
- Battery condition indicator
- Engineered sound vibration and noise attenuation system for engine room spaces consisting of lead tile sound barriers and Mylar faced synthetic lead-foam insulation covered with white painted aluminum perforated sheeting. Custom sound mounts for main

- engines, generators, engine room stanchions, head pumps/motors, air conditioning compressors and sea water cooling pumps
- AQUAMET 22 or equal propeller shafts
 - Stainless steel rudder blades
 - Nibral propellers, 5 blade, dynamically balanced, class 'S'.
 - DURAMAX cutlass rubber stern and rudder bearings
 - PYI packless shaft seals
 - 110vAC weather tight fluorescent lights
 - Automatic 24vDC emergency lights
 - Smoke detectors
 - Telephone jack
 - 110vAC outlets, four GFI type
 - Watertight door from engine room to Lazerette
 - NUTONE central vacuum system for all areas

Pilothouse

- KOBELT electro-hydraulic steering
- KOBELT electronic dual lever engine control
- Custom stainless steel wheel
- Engine instrumentation and alarms
- Instrument and electronics console
- Windshield defroster
- Long arm pantograph windshield wipers with fresh water wash system
- Red night lights and switch
- High quality vinyl flooring
- CROWN Mariner manual helm chair (1)
- Upholstered bench seat with storage under and wood table
- Electrical panel
- Pantograph doors to side decks (2)
- Storage cabinets and chart desk

Flybridge

- Molded GRP stairs to upper deck
- Folding hatch and stairs to pilothouse
- Life rafts and chocks
- Painted fiberglass Jacuzzi platform with lockers, fresh water wash down hose bib, stairs and Jacuzzi tub.
- On deck head with day head with floor mounted HEADHUNTER electric head (fresh water flush), faucets and accessories, marble or CORIAN^(C) counter top with sink and exhaust blower.
- Open shower to starboard, with drain through floor grating
- Scuppers and drainage system for water to lower deck
- KAHLENBERG electro-pneumatic compressor driven air horn

- Storage compartment in false stack

Main Deck Salon and Day Head

- Staircase down to guest staterooms and up to upper deck
- Stainless steel tinted tempered glass sliding doors to aft deck
- Telephone jack
- Smoke detector
- Cabinet for entertainment center, no units
- Line voltage halogen ceiling lights with control/dimmer switches
- Soffit and floor lighting with control switches
- Emergency lighting
- Built-in L-shaped settee and cocktail table (loose chairs are optional)
- Wooden dining table with eight chairs
- Wood dining buffet unit with storage under
- Overhead dining light fixture
- 110vAC duplex outlets (4) in salon, one GFI type in head
- Pantograph door to starboard side deck
- Day head with floor mounted HEADHUNTER electric head (fresh water flush), faucets and accessories, marble or CORIAN^(C) counter top with sink and exhaust blower.

Main Galley

- Stainless steel four element range/oven unit
- Stainless steel microwave oven with ventilation hood
- Two stainless steel 24 cu.ft. side-by-side refrigerator/freezer units, with ice dispensers
- Stainless steel dishwasher
- Stainless steel double sink
- Faucet with removable sprayer handle
- Instant hot-water dispenser
- Garbage disposal
- Wood cabinetry
- CORIAN^(C) counter tops
- Smoke detector
- Line voltage Halogen ceiling lights
- Under cabinet lights
- 110vAC outlets, 6 GFI type
- Storage lockers
- Door to dining room
- Pantograph door to port side deck
- Door to starboard entry to foyer

Crew Galley / Dinette

- Microwave / convection oven
- Four element cook top

- Extractor hood
- 10 cu.ft. refrigerator / freezer
- Stainless steel double sink with faucet
- High quality vinyl flooring
- Telephone jack
- Storage cabinets in high quality laminate
- CORIAN^(C) counter top
- Smoke detector
- Halogen ceiling lights
- Under cabinet lights
- 110v AC outlets, 4 GFI type
- L-shaped dinette with CORIAN^(C) topped table
- Entertainment cabinet, no units

Sky Lounge

- L-shaped settee with wood table
- Smoke detector
- Carpeted flooring
- Wood storage cabinets and drawers
- Hinged door to upper foyer room and sliding stainless steel tempered glass doors to aft deck
- 110vAC duplex outlets, (4)
- Wet bar with U-Line refrigerator and ice maker units, stainless steel sink with hot and cold water supply, and CORIAN^(C) counter top and liquor storage. Bar stools are optional.
- Day head with floor mounted HEADHUNTER electric head (fresh water flush), faucets and accessories, marble or CORIAN^(C) counter top with sink and exhaust blower.

Upper Deck Office

- Wood desk with storage cabinets and drawers
- High quality vinyl flooring
- Smoke detector
- Doors to upper foyer and captains stateroom
- 110vAC duplex outlets (2)

Master Stateroom

- King berth with storage drawers under
- Over the berth soffit with indirect lighting on dimmer control
- Two night tables with storage
- Telephone jack
- Smoke detector
- Cabinet at foot of bed. TV and TV lift are optional
- Storage lockers
- Mirrored hanging closets, cedar lined on back surfaces

- Built-in vanity desk with seat, storage drawers and mirror
- Upholstered chair
- Line voltage halogen ceiling lights with dimmer switch
- Soffit and floor lights with control switch
- Berth reading lights
- HEADHUNTER electric head (fresh water flush)
- Shower stall (his)
- Jacuzzi tub (her's)
- Faucets and bath accessories
- CORIAN^(C) counter tops with two sinks and storage cabinet underneath
- Mirrored medicine cabinets (2)
- Exhaust blowers (2)
- 110vAC duplex outlets (3) in stateroom, two in GFI type in each head

Lower Guest Foyer

- Staircase from main foyer
- High quality vinyl flooring
- Locker under stairs
- Line voltage Halogen ceiling lights with control switch
- Side by side MAYTAG commercial washer and dryer units
- Smoke detector

Guest Staterooms and Heads (4)

- Island queen berths or twin single berths as per General Arrangement drawing
- Storage cabinets
- Port lights with shades (one per stateroom and one per head)
- Night tables with storage
- Under berth storage drawers
- Telephone jack
- Smoke detector
- Mirrored wardrobe with cedar lined back surface and automatic light
- Line voltage halogen ceiling lights with control switch
- Soffit and floor lights with control switch
- Two reading lights
- Stall shower or tub per General Arrangement drawing
- Floor mounted HEADHUNTER electric head (fresh water flush)
- Mirrored medicine cabinet
- Faucets and bath accessories
- CORIAN^(C) counter top with sink and storage cabinet under
- Exhaust blower
- 110vAC duplex outlets (2) in each stateroom, one GFI type in each head

Captain's Stateroom

- Double berth
- Line voltage halogen ceiling lights with control switch
- Reading light
- Smoke detector
- Wardrobe cedar lined on back surface
- High quality vinyl floor
- Telephone jack
- Floor mounted HEADHUNTER electric head (fresh water flush)
- Stall shower
- Faucets and bath accessories
- CORIAN^(C) counter top with sink
- Mirrored medicine cabinet
- Exhaust blower
- 110vAC duplex outlet (1) in stateroom, one GFI type in head.

Crew Cabins

- Upper and lower berths
- Smoke detector
- Wardrobe cedar lined on back surface
- Halogen ceiling lights with control switch
- Reading lights
- High quality vinyl floor
- Telephone jack
- Floor mounted HEADHUNTER electric head (fresh water flush)
- Stall shower
- CORIAN^(C) counter top with sink
- Mirrored medicine cabinet
- Faucets and bath accessories
- Exhaust blower
- 110vAC duplex outlet (1) in stateroom, one GFI type in head

Aft Deck

- Fiberglass stairs to skylounge aft deck with hatch
- Painted non-skid deck
- Fiberglass stairs to swim platform
- Overhead lights with control switch
- Access stairs to engine room from port side deck
- Access stairs to Lazarette from starboard side deck
- L-shaped sofa with painted fiberglass pedestal mount table
- MAXWELL VC8000 hydraulic warping capstans port and starboard
- Port and starboard mooring bollards

Lazarette and Swim Platform

- Hydraulic opening transom door forming extended swim platform when open
- Painted non-skid swim deck
- Stainless steel swim ladder
- Fresh water telephone shower, hot and cold
- Locker for shore power, TV and telephone inlets
- Internal stairs to starboard side deck
- Molded stairs from swim platform to aft deck
- Shower room including: Stall shower in GRP moulded enclosure
CORIAN^(C) counter top with sink
Mirrored medicine cabinet
Faucets and bath accessories
Exhaust blower
- Head compartment including: Floor mounted HEADHUNTER electric head (fresh water flush)
CORIAN^(C) counter top with sink
Mirrored medicine cabinet
Faucets and bath accessories
Exhaust blower
- Dive bottle storage rack
- Wet locker storage
- Cable master room
- Main electrical switchboard

Owner's Manual

- Vessel supplied with a list of major equipment, serial numbers and manufacturers' contact details. Manufacturer equipment manuals will be supplied as available. Drawings for major systems, safety, and docking plans are supplied on CD.

Optional Equipment

- Electronics
- RITCHIE 5" compass with light, dimmer and cover
- Teak decks
- Built-in safe for master stateroom
- Telephone/intercom units
- Integral chain counter on windlass controller
- Audio visual systems
- Dinghy, chocks and backing plates in deck
- Trash compactor in galley
- Soft goods decor, such as drapes, valance boards, Roman shades, headboards, bed treatments
- Loose furniture and stools
- Powered windows in sky lounge
- Spare parts as required by classification society

NOTES TO SPECIFICATIONS

- (A) Right is reserved to make changes at any time, without notice, to prices, materials, specifications and equipment. Drawings may show optional items. Where specifications differ from drawings, the specifications shall have precedence.
- (B) Capacities are estimated to be the total of all constituent tanks $\pm 5\%$. Usable capacities will vary depending on conditions.
- (C) References to CORIAN include a choice of CORIAN or AVONITE from builder's standard range.